

WESTSIDE KC COMMUNITY SAFETY TIPS - Be Prepared for Major Events & Street Closures



Kansas City hosts major events year-round—like March Madness, First Fridays, marathons, the Kansas City Chiefs, Kansas City Royals, the NFL Draft and now the FIFA World Cup-watch gatherings—which bring excitement, extra taxes/revenue, but also heavy traffic, large crowds, and limited availability of emergency services. Westside residents should expect limited parking during these times and plan ahead to secure a spot

Let's be prepared



PLAN AHEAD

- Refill prescriptions **1–2 weeks early**
- Stock essentials: water, food, first aid, batteries
- Keep your gas tank at least **half full**
- Have some **cash available**
- Order groceries and medications early



BE WELCOMING & VIGILANT

- Visitors support our local economy—be respectful and kind
- Tourism and events contribute to tax revenue that helps improve our neighborhoods
- Stay aware of your surroundings, but lead with a welcoming attitude
- A safe, friendly community benefits everyone

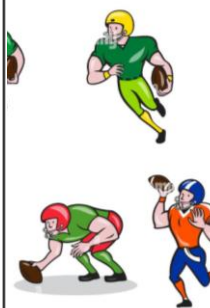
SHORT-TERM RENTAL AWARENESS

- If you or your neighbor participate in a short-term rental program, ensure the property is **registered with the city**
- Inform nearby neighbors so they are aware of expected guest activity
- Clear communication helps prevent unnecessary reports of suspicious activity
- Maintain safe, respectful conditions for guests and the surrounding community

IMPORTANT PHONE NUMBERS

- **Emergency (Police / Fire / EMS): 911**
- **Kansas City Non-Emergency Police: 816-234-5111**
- **City Services & Complaints (311): 311** (or 816-513-1313)
- **Missouri Poison Control: 1-800-222-1222**
- **Local Utility Emergency (Gas): 911** or utility provider emergency line
- **Family Emergency Contact: Name _____**
Phone _____

Tip: Save these numbers in your phone and post them somewhere visible at home.



EXPECT DISRUPTIONS

- Street closures in Westside, Downtown, and Crossroads.
- Increased traffic and parking restrictions
- Delays for deliveries and services
- Add extra time for travel and think alternate routes.
- **Limited availability of police, fire, and EMS**

HOME & VEHICLE SAFETY

- Lock doors, windows, and vehicles
- Remove valuables from your car
- Do not block hydrants or emergency routes
- Bring in packages before event crowds arrive



STAY INFORMED

- Follow local alerts for road closures and emergencies
- Save alternate routes and offline maps
- Check on neighbors, especially seniors or those with medical needs

BUSINESS & COMMUNITY RESPONSIBILITY

- Local businesses should help keep sidewalks and streets **clean and safe**
- Proper trash disposal and crowd management are essential during busy events
- Maintain safe entrances, exits, and lighting
- Work together with neighbors to reduce hazards and keep the area welcoming

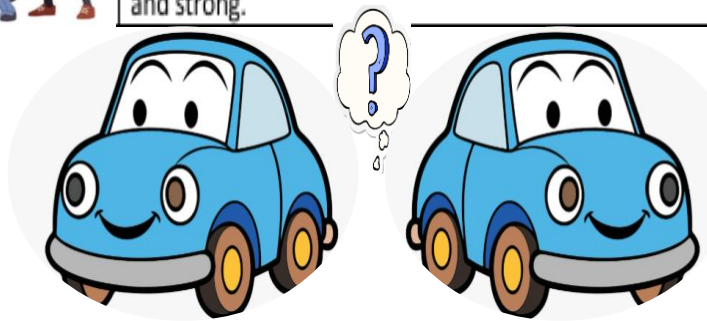


STAY SAFE DURING EVENTS

- Avoid unnecessary travel during peak times
- Stay in well-lit, populated areas
- Keep your phone charged (carry a battery pack)
- Share your location with a trusted contact
- Choose a meeting spot if attending events

REMEMBER

Large events can stretch city resources. Being prepared, staying aware, and working together as residents, visitors, and businesses helps keep our community safe and strong.



REPORT & ADVOCATE: During major events, if you experience issues like delayed emergency response, blocked streets, trash buildup, or safety concerns: Call **311** to report the issue, **Request a case number** for documentation, Track repeated problems over time, then contact your local city council office and neighbor association to share your concerns and case numbers. Community reporting helps improve planning, resource allocation, and safety services for neighborhoods like Westside. - **Stay ready. Stay safe. Be kind. Look out for one another.**